



# Leadership

Presented by:



# Leadership Considerations



## Leadership...

**The capacity or ability to lead.**  
**The position or office of a leader.**



# Why the topic of Leadership?



**ELKS have a need for Good Leadership in order to be successful, at our programs and in our benevolence!**

**We have many leaders:**

- **Lodge Officers**
- **Committee Chairpersons**
- **GER, DD, SP, VP, ER, PERs, PSPs, PVPs, PDDs, etc.**
- **All must take a leadership role for the Elks to be successful**



# Working with Volunteers



In the Elks, we are working with volunteers, so our leadership tactics must be different

“Ordinary People can make an Extraordinary Difference”

## How?

By learning leadership when working with volunteers





# Volunteers



## When you joined your lodge...

- Did you feel welcome?
- Were you greeted with open arms?
- Were you treated kindly?
- Were you asked to participate and help out?

**Maybe but perhaps not!**



# Leadership of Volunteers 101



- **Make people feel comfortable**
- **Greet them with respect**
- **Make them feel special, appreciate their work**
- **Get to know the individuals**
- **Introduce them with enthusiasm**
- **Offer to help, but let them do it their way**
- **Give them Recognition...Often!**



# Leadership of Volunteers 101



- **Put yourself in their shoes**
- **Listen more than you talk**
- **Don't blame, it may be your fault**
- **Good Communications, tell them what is expected, not how to do it**
- **Thank publicly**



# Leadership Skills



- **Be Patient**
- **Be Fair**
- **Be Decisive**
- **Be Consistent**
- **Be Helpful**
- **Most of all “Be Thankful and Recognize”**





**Delegate does not mean ... "DUMP"**

**Delegate means:**

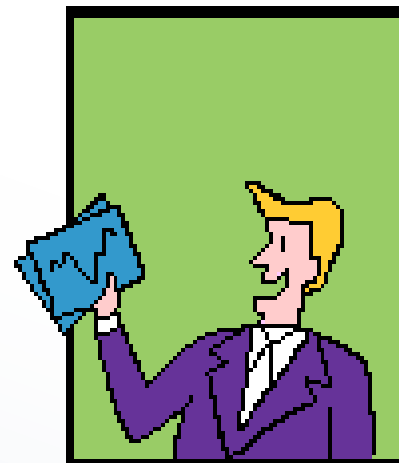
- You trust them
- You give them ownership
- You have faith in their performance



# How to Delegate The Three L's



- 1. Look for good people.**
- 2. Listen to them.**
- 3. Let them shine**



# A survey was taken, why people volunteer...

...The most significant reason people volunteer is for **continuous recognition** and **appreciation** from their leadership.

- Thank them at meetings
- Print a thank you in your Lodge bulletin
- Present a certificate or a plaque at a meeting or ceremony.
- Don't ever forget.
- Do it often.





# Leadership



**YOU** can be a great **Leader** and

... **Grow your Membership**

... **Grow attendance at meetings**

... **Grow Elkdom in your Community**